



www.artquarterly.com

THE ART QUARTERLY

SUMMER/FALL 2008

LIVING AN ELEGANT LIFESTYLE

INSIDE THIS ISSUE:

LIVING AN ELEGANT LIFESTYLE 1

HOLIDAY IDEAS 2

VINTAGE LEADERS 2

FROM THE BLOG 3

FEATURED 3

PHOTOGRAPHERS

ARTIST HIGHLIGHT 4

GIFT CARD 4

MARKET TWO 5

This issue of the Art Quarterly is a special election and economy issue. Two days after the historic and proud moment that most American's witnessed, the underlying facts remain that many parts of society are in flux. Change is good and keeping a lifestyle elegant is more a possibility than ever when done with GALLERY M. In addition to our consistent posts at artquarterly.com, we offer you answers to how best to navigate the art world going forward.

On November 14, 2008 "America in All Her Grandeur" opens at GALLERY M. Comprised of major installation works (landscapes and performers) and new studies by international fine artist Jay Wolf Schlossberg-Cohen, the astute collector and novice alike will find works to cherish.

Two monumental works: The Infinite and The Intimate Cap Rock, each completed in 2001 for display in the US National Park Service collection, stress the composition strength, the passion and the power of this highly skilled painter. **The Infinite** documents the long history of America's Western deserts and paradises – Lake Mead, Joshua Tree, Palm Springs and even the Sonoran mountains that surround this great land. Layered canvas cut-outs reveal early settlers with their farms and windmills to the gondolas and modern wind farms that greet vacationers to Palm Springs and Palm Desert today.



America in All Her Grandeur

The Detail of The Red Car in "The Intimate Cap Rock" is shown above. The painting measures 4 1/2Ft by 13 Ft as it rests currently in GALLERY M's atrium.



The Infinite, 2001. Jay Wolf Schlossberg-Cohen. The painting measures 4 1/2Ft by 13 Ft.

course Joshua Trees which pave the highway to Jay's "Red Car". And when observed from the left you catch the realization that the painting's awesome nature is due to the hours, days and weeks that formed this majestic work. Meet Mr. Wolf Schlossberg-Cohen on November 14th at 6 PM. He will conduct a special session detailing other major US installations and introduce his "Collectors Edition" portfolios – original studies in acrylics and watercolors.

As the title depicts, there are multiple ways to experience The Infinite. Stand to the right and the painting carries you as if you were standing for the first time on a nearby plateau; view the work head on and the smallest of details reveals Palms, Cacti and of

GALLERY M TURNS 13

By now most are aware of the historic point that America's election system experienced. While GALLERY M began it's 13th year on November 1st (or depending on some – we are 13 years old), the global economy has made most look around and ask "if what we see makes us happy?" Due to financial pursuits certain aspects of the fine art world have become purely a folly for investment excess. Other aspects have remained tried and true. History does lead collectors to success when you collect works that you love first because of it's personal meaning and inspiration vs. purely deciding on it's investment worth. With the fluidity of the internet today, better means of valuing works are available. This makes you as a collector and us as an established gallery better at what we do. Sometimes, the "experts" get ahead of themselves – as seems to be the case with the major auction houses. Christies, like in the 1980s and the departure of the Japanese collectors, experienced their own type of meltdown this week by offering "The Modern Age" collection. The results were paltry at best and left Christies owning the work through their guarantee. In time the collection will find buyers – when the financial confidence is restored through rational pricing and expectations. Hail to the free markets!

ENTRIES: THE ARTS TRANFORM IN TIME

November 7, 2008: The arts, like stocks, have followed society's economic and political winds. We have seen artists take stands: Diego Rivera and his communist themed mural that Rockefeller forcefully had to remove, Gauguin's Tahitian ventures that transitioned the turn of the century from Impressionism to Modern Art / Cubism and then of course the constant deconstruction of visual thought offered by Picasso as he aged. Each imbedded influences and markers of their times in their works - some were later to be hailed as great master pieces. The net effect is that a work inevitably will illicit a response to an audience capable of experiencing the work. If there is no "gut" feeling for the work, then in most cases a collector should move to another work, medium or avoid the arts all together. For those savvy enough to carry on with their passion, the current structural changes facing American and global collectors do offer exciting opportunities for both established and emerging talent. The key is to collect works that move you today and then, if all else aligns, will reward you and your loved ones in the future financially.



The sway in the flags waved with King's leadership - Signed, gelatin silver by Ted Williams. Limited to 5 with 3 artist proofs, Image Size: 16" x 20".

NATIONAL ART BEAT: PREVIOUS POLITICAL CHANGE FEATURED IN PHOTOS



Featured:
^ Freedom March, 1963—The civil rights rally in DC that gave America "I Have A Dream" delivered by Martin Luther King. Vintage photograph by Robert Kelley. It measures 11" W x 7 7/8" H. The unique markings and condition issues are: many creases throughout; printed off-center; gray dull print; emulsion missing upper right corner.

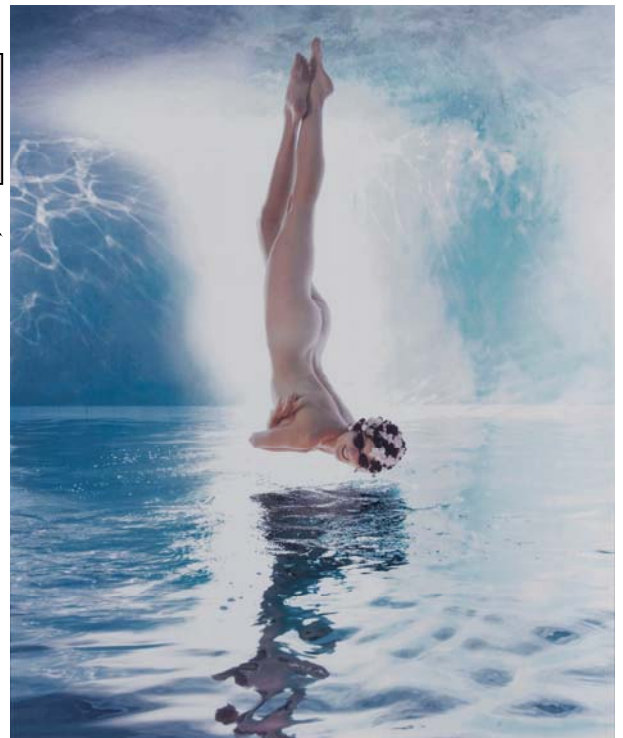
When the conventions hit both Denver and St. Paul, expectations were high for parties convinced of their policies. Pride and effort yielded outcomes reflective of their hard work. At the end, our choice for a leader was heard globally and unanimously.

"LEADERS and THEIR FOLLOWERS" continues at GALLERY M through November 30th, 2008. It highlights past administrations, domestic and foreign, their moments of glory and, yes, their often outcomes of despair needing repair with hope. The photojournalism by Alfred Eisenstaedt in the 30s, Carl Mydans during the FSA and Margaret Bourke-White's grand coverage of America's first public works projects are windows to how America today can avoid economic peril with upcoming policy challenges.

Some collectors have already taken advantage of the Vintage photographs available in this collection. Contact GALLERY M today to work with a consultant on other photographs worthy of their historical importance.

<http://www.gallerym.com/event.cfm?ID=35>

Howard Schatz:
Underwater Study 3126
16" x 20" Cibachrome Print,
Signed and Limited



HOLIDAY SUGGESTIONS

Mindful of the economic priorities, contact a GALLERY M consultant today for pricing and availability on beautiful options for holiday art options, 1.877.331.8401. Remember GALLERY M offers complimentary gift services ensuring your work is received timely and elegantly.

< Sophia Loren in "Marriage Italian Style " 16" x 20" gelatin silver print by Alfred Eisenstaedt. Copyright Time Inc.



**FROM THE BLOG:
AUGUST 28, 2008**



^Scene With Abandoned Broke Down Car In Open Field, Bend Oregon, 1935 by Alfred Eisenstaedt. Gelatin Silver Print.

As part of the Denver Democratic convention, GALLERY M's "Leaders and Their Followers" photography selling exhibit has tapped a great natural resource - Colorado leaders in the arts, economy and yes government policy. On Monday August 18th, a crowd of collectors gathered for a special evening with program manager for the State of Colorado's energy policy, Mr. Morey Wolfson.

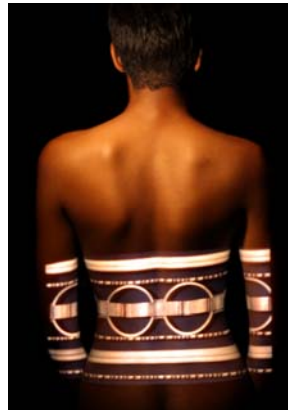
Wolfson, a 40 year expert in energy and environ-

mental policy, detailed the great renewal underway in Colorado's rural communities specific to wind and other alternatives like solar, CNG and even the trade off's of domestic oil and coal production. He pointed out that the heartland is already bustling with economic growth efforts set in place by multinational companies - Vestas, GE, and various sectors crucial to reducing the carbon footprint in Colorado and nationally. Does this mean the end of the car as we know it?



< Cheetah Pair , Bronze by Loet Vanderveen.

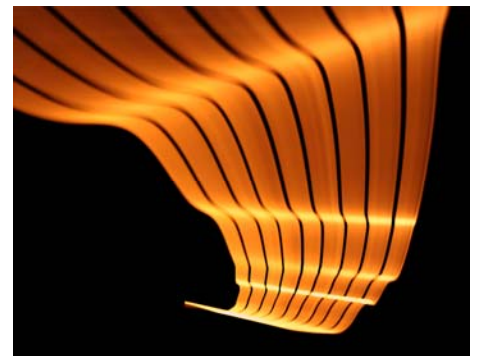
**BALANCING LIGHT:
EMERGING
TECHNIQUES**



^ Deco Waistband , Signed C- Prints print. By Joshua Barash 36" x 25"

In the emerging photographer front, GALLERY M finds the photography of West Coast based Joshua Barash compelling because of his use of light and form. Barash, whose commercial photography experience allows him to achieve new dimensions with his fine art photographs, does employ a two step process to create his works. One is to find structures of interest (buildings, bridges, cars and the like) and the other is to cast the first image onto a compelling surface: a nude typically. The effect works. Mind you that Barash has to take two separate stunning photos first and then weave each together. His process contrasts light with dark and then the tones in between. Visit his section at gallerym.com to find the work that fits in for your collection.

At the established level, GALLERY M continues to proudly represent the latest works by Howard Schatz. While still forthcoming, his venture choreographing his studies with "light and liquid" are purely mesmerizing. A consummate achiever, Howard somehow finds time in his busy schedule to explore abstract photography avenues - sometimes in an effort to solve a related conceptual issue; sometimes as the end to the means with his own learning of new techniques. Schatz's abstract patterns are created in a flash of seconds if not the digital millisecond controlling his camera's shutter. Schatz continues to reward collectors with something fresh - as his vision keeps it interesting for both he and his collectors. His fine art photographs remain signed and limited. Of course not all works are created equal - as technology has changed, processes have become easier and less time consuming. Earlier works had more material costs as well as physical requirements. As with most rare creations this makes the photograph more valuable. Look for his works that are signed cibachrome or gelatin silver photographs. Going forward, his new releases are printed using digital archive materials which are "equally" capable of standing the test of time. Through GALLERY M these works are limited in editions typically 24 or less and range in traditional and non-traditional photograph sizes. Mounting his larger works is possible while his smaller works should, in the tradition of collecting, remain properly framed.



^ Light Study 1049 by Howard Schatz, 2008.